



CABLE 051 RF: RF CABLE ASSEMBLY, MMCX R/A PLUG + SMA FEMALE BULKHEAD WITH FIXED O-RING + MULTIPLE CABLE SIZES

SPECIFICATIONS:

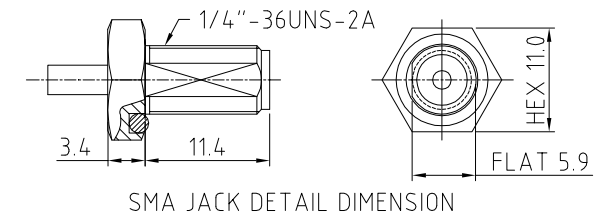
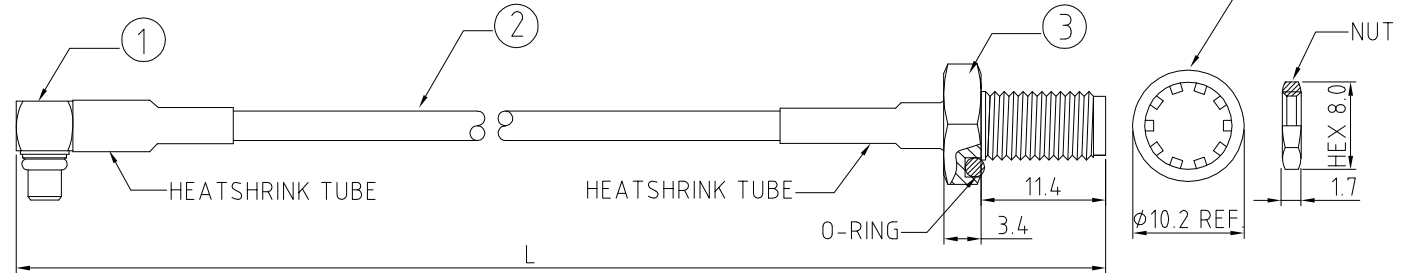
1. MMCX RIGHT ANGLE PLUG, GOLD. P/N:  
FOR RG174/RG316 CABLE: RFCT-MMCX004-M74.  
FOR RG178 CABLE: RFCT-MMCX003-M78.
2. COAXIAL CABLE, SEE PART NUMBER FOR DETAIL.
3. SMA ST BULKHEAD W/O-RING, GOLD. P/N:  
FOR RG174/RG316 CABLE: RFCT-SMA032-F74.  
FOR RG178 CABLE: RFCT-SMA032-F78.

NOTES:

1. THE ORIENTATION OF CONNECTORS ON DRAWING IS FOR REFERENCE ONLY, IF THE ORDER IS LEFT BLANK THE CONNECTOR WILL NOT HAVE FIXED ORIENTATION.
2. FIXED ORIENTATION IS SUGGESTED FOR CABLE LENGTH 70MM TO 100MM. PLEASE SPECIFY THE FIXED ORIENTATIONS FROM THE ORDER CODE (F1, F2, ETC).
3. CONTACT GRAD CONN IF THE ORIENTATION YOU REQUIRE IS NOT SHOWN.
4. WORKING FREQUENCY RANGE:  
DC-3GHz (RG174 CABLE)  $\Delta$   
DC-6GHz (RG316/RG178 CABLE)
5. IMPEDANCE: 50 OHM.
6. TEMPERATURE RANGE:  
-20°C TO +80°C (RG174 CABLE)  
-40°C TO +125°C (RG316/RG178 CABLE)

USAGE PRECAUTIONS: CABLES USING 'MICRO' COAX ARE DELICATE:

- (i) HANDLE WITH CARE.
- (ii) DO NOT TWIST; APPLY EXCESSIVE FORCES OR SHARP BENDS TO THE CABLE. DO NOT FORCEFULLY DEFORM WIRES.
- (iii) CONSULT CONNECTOR MANUFACTURER'S DATASHEETS FOR DETAILED NOTES ON HANDLING INSTRUCTIONS.



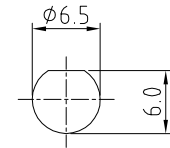
HOW TO ORDER  
CABLE 051 RF - X X X X - X X - X - X

"L" LENGTH IN MM:  
eg: 100MM = 0100  
(MIN. 0070,  
STANDARD = 0100, 0150, 0200)  
Tolerance: 70-200mm:  $\pm 5$ mm.  
201-500mm:  $\pm 7$ mm.  
>501mm:  $\pm 10$ mm.

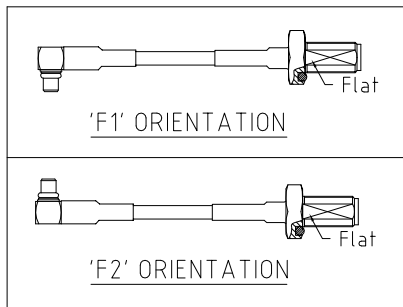
WASHER AND NUT OPTIONS:  
BLANK = SEPERATELY PACKED (STANDARD)  
A = ASSEMBLED WITH CONNECTOR

ORIENTATION OPTIONS:  
BLANK = DOES NOT HAVE A FIXED ORIENTATION  
F1 = MMCX CONNECTION DOWN (L=70-200MM)  
F2 = MMCX CONNECTION UP (L=70-200MM)  
(SEE NOTES 1, 2, 3 AND DIAGRAMS FOR MORE INFORMATION)

CABLE SIZE OPTIONS:  
BLANK = RG174 CABLE, COLOR: BLACK  
1 = RG316 CABLE, COLOR: BROWN  
2 = RG178 CABLE, COLOR: GROWN



RECOMMENDED SMA MOUNTING HOLE



REV. DATE & DRN	10 08/09/08 - NYW RELEASE
11 08/12/08 - NYW	ADD WASHER AND NUT OPTIONS
12 18/09/08 - PCY	ADD WORKING FREQUENCY RANGE
13 10/17/11 - NYW	ADD ORIENTATION OPTIONS.
14 30/07/15 - NYW	ADD REG 316 CABLE OPTION.
15 29/03/16 - NYW	AMEND FREQUENCY TO 6GHz.
16 07/09/20 - NYW	AMEND MIN. CABLE LENGTH.
17 18/09/20 - NYW	UPDATE SMA & MMCX P/N'S.
	AMEND RG178 CABLE FREQUENCY.

Scale: NTS	THIRD ANGLE	Unstated X .XX .XXX ANGLES	Tolerances: N/A N/A N/A N/A	Material SEE NOTE
Drawn: NYW				
App'd: XXX	Title: CABLE ASSEMBLY			NOT TO SCALE
Date: 18 SEP. '20	Revision: 1.7			Unit: mm

www.gradconn.com

THIS DRAWING IS CONFIDENTIAL AND MUST NOT BE COPIED OR DISCLOSED WITHOUT WRITTEN CONSENT

Type: Cable 051 RF
CABLE 051 RF
Drawing Number:
Sheet 1 of 1
Drawing © E and O E